

Pop-Up Basel SBB Railway Station.

Store Documentation.



Pop-Up Store at Basel SBB Railway Station.



Versatile usage options and a perfect brand presence: innovative products and services can be showcased.



Basel SBB Railway Station is a major hub for international rail traffic and a popular meeting point for shopping, dining and leisure.

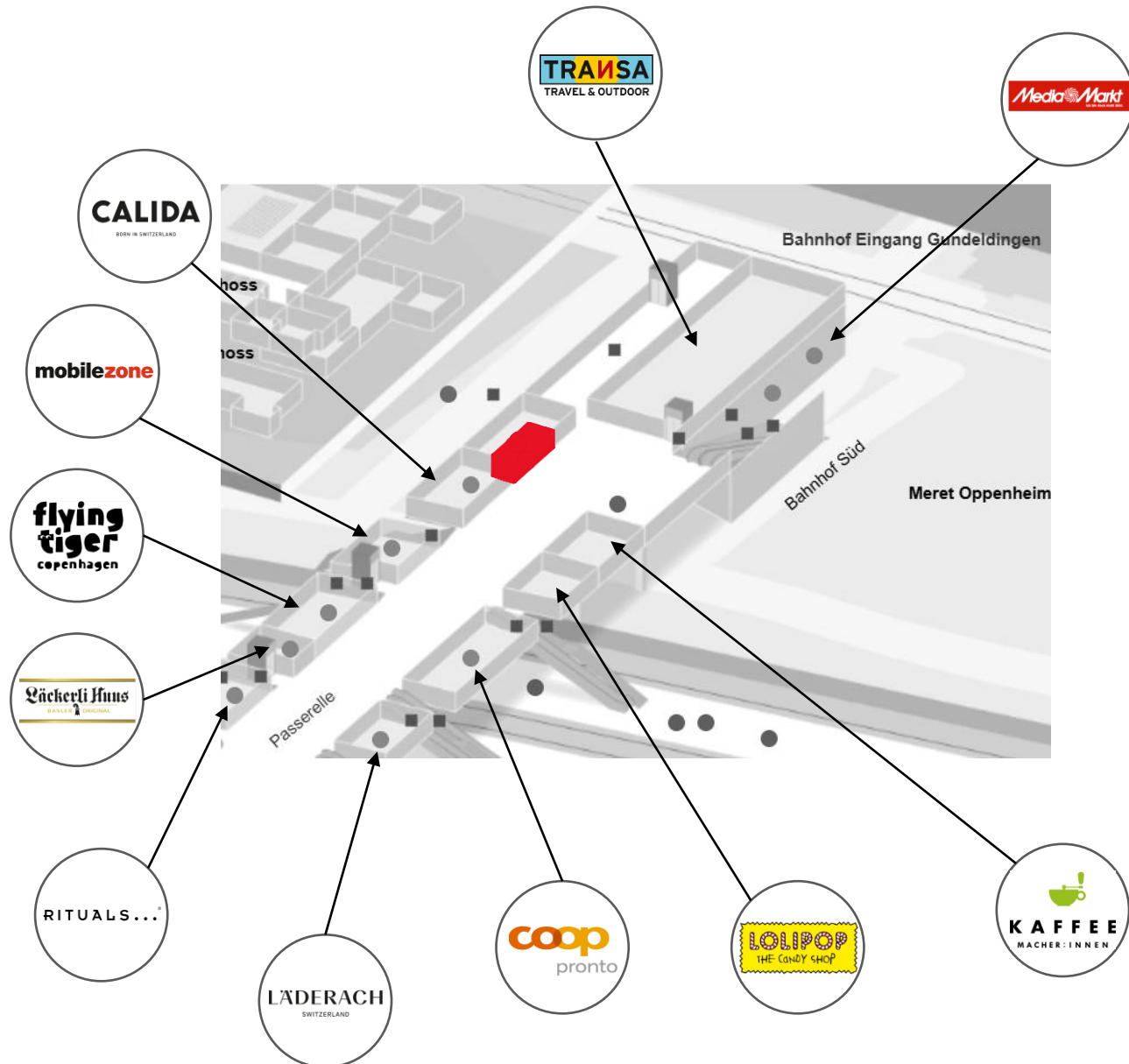


As a tenant, you benefit from a prime location as well as extended opening hours 365 days a year.



Our goal is to offer our customers and yours a wide variety of experiences and to develop Basel SBB Railway Station into a vibrant and trendy center with strong visibility and innovation.

Location within Basel SBB Railway Station.



The pop-up space is located on the first floor on the passerelle and is marked in red on the floor plan.

Other tenants in the immediate vicinity include: Transa, Media Markt, Flying Tiger, Lolipop, Läderach, Coop Pronto, etc.

The full list of tenants can be found on the [Basel SBB station map](#).

approx. 142'000
passers-by daily at the station.

Overview of the Space.

Exterior area:

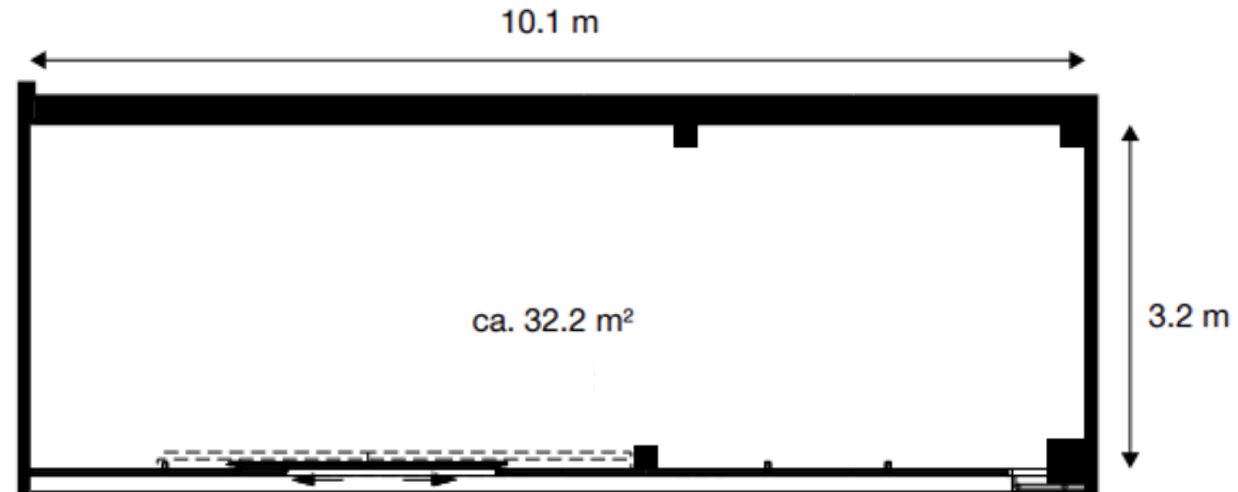


Interior area:



approx. 28'000
passers-by daily in front of the space.

Floor Plan.



Sales area: approx. 32.2 m²

Storage area: approx. 30.6 m²



Fit-Out Information.

Responsibility	Topic	Information
Base fit-out (by the landlord)	Heating, Cooling & Air Conditioning	available
	Electricity & Internet	Multiple power sockets WiFi modem incl. LAN connection within the space
	Ceiling lights	TRILUX LiveLink lighting concept with LED spotlights
	Flooring	Low-maintenance hard flooring
	Water	Water connection incl. hand washbasin available
	Entrance	Automatic sliding door, badge-controlled access
	Toilet facilities	Staff WC available for shared use on the 2nd basement level
	Shop signage	LED lightbox 1x above the entrance door
Tenant fit-out	Shop signage	Pre-tensioned fabric graphic for LED lightbox
	Interior	Furniture fittings incl. cash desk and POS system

Facts & Figures.



Rental duration

3 months

Shorter or longer rental periods available upon request



Target opening hours

Mon–Fri: 10:00–19:00

Sat–Sun: 10:00–18:00 (incl. public holidays)



Type of use

Sale of non-food products; showroom or gallery use

Authorization for the sale of pre-packaged food and beverages is currently under review with the authorities.

No production or gastronomy use, as no grease exhaust system is available.



Rent per month

Turnover-based rent: 10% (for startups)

Additional costs: approx. CHF 350 per month (flat rate covering storage, heating and operating costs as well as electricity; subject to concept)

Additional costs

Final cleaning: CHF 400 (one-time)

Fabric graphic: around CHF 500 (one-time)



Communication channels

Location-based presence on sbb.ch, the “SBB Mobile” app and the “SBB WiFi” landing page.

We Look Forward to Your Concept.



We look forward to working with you as an innovative partner to activate the pop-up store at Basel SBB Railway Station and to offer our customers and yours an exciting shopping experience.

Whatever your plans may be, we support you with a professional and sustainable partnership – from implementing your ideas to accompanying you on your path to success.

Set the course for your future with us and start your own success story!



Contact.

popup-basel@sbb.ch