

Pop-Up Zurich Main Station



Why choose SBB Pop-Up?



High footfall

Continuous passenger flows from commuting and leisure travel, seven days a week.



Strong visibility

Central locations within railway stations and clear orientation systems.



Market validation

Opportunity to test product ranges, pricing and brand presence under real conditions.



Development potential

Successful Pop-Ups may serve as a basis for long-term leasing solutions within SBB stations.

Facts & Figures.



Rental period

3 Months

Shorter or longer rental periods on request



Opening hours

Mon - Fri 09.00 – 21.00

Sat - Sun 09.00 – 20.00 (incl. Public holidays)



Type of use

Sale of products in the **food** sector.



Rent per month

On request. Special conditions for start-ups.



Communication channels

Location-based presence on sbb.ch, the “**SBB Mobile**” app, as well as the “**SBB WiFi**” landing page.

Site plan.



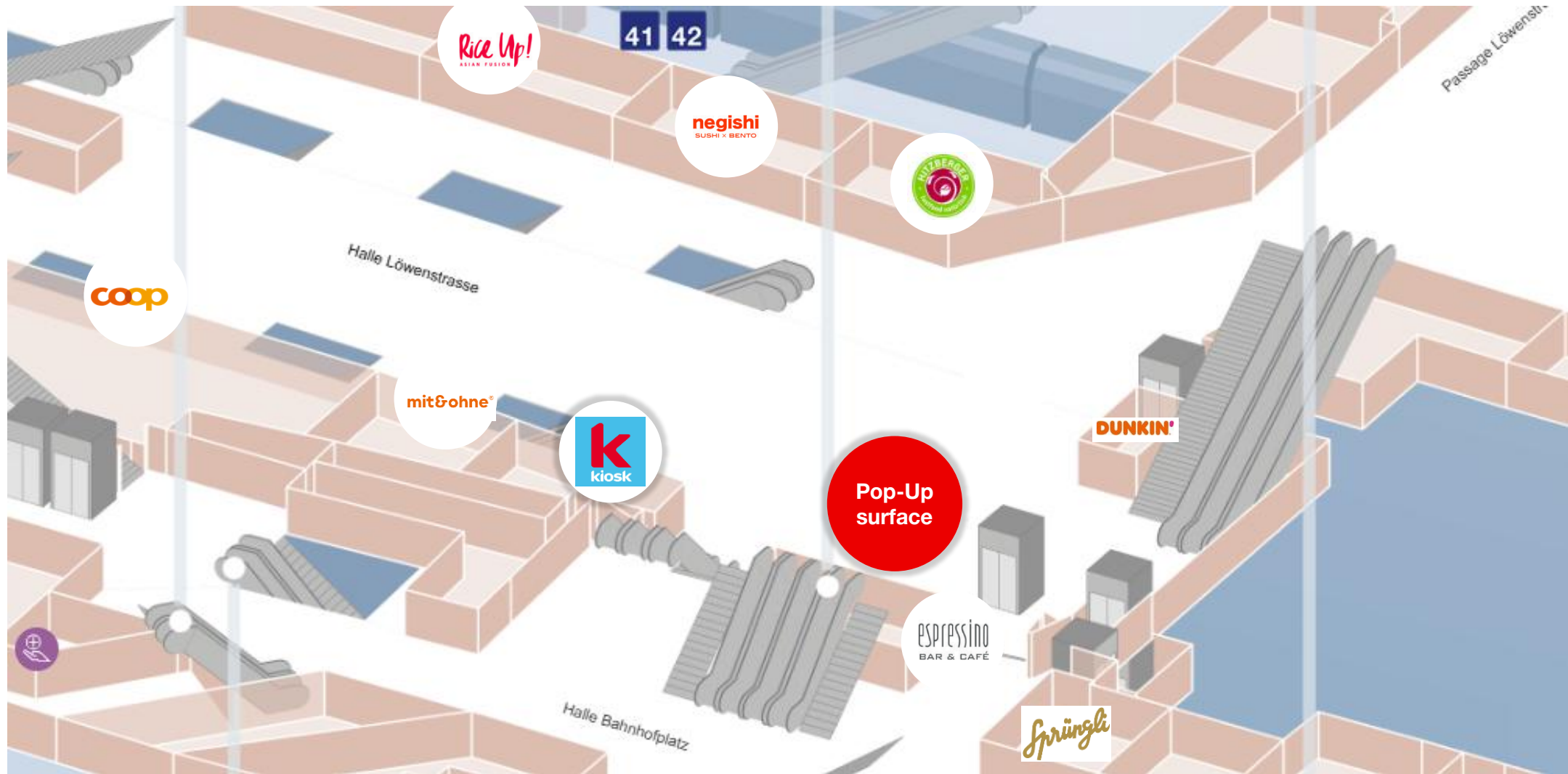
The pop-up station is located at Zurich main station on the 2nd basement floor of the 'Halle Löwenstrasse' and has explicitly been designed as a take-away restaurant. The location is marked in red to the right on the floor plan.

In the immediate vicinity, there are recreation areas with seating, which liven up the attractive surroundings. An exciting and varied mix of tenants in the neighbourhood invites you to go shopping and stroll around.

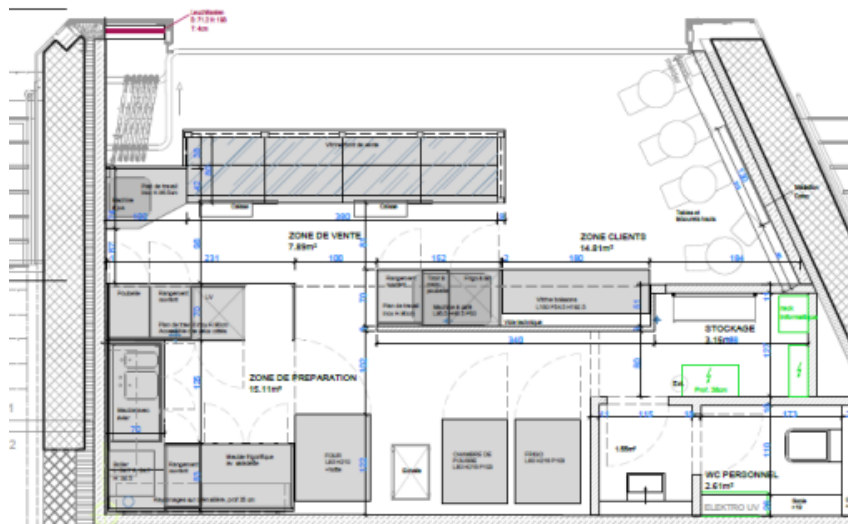
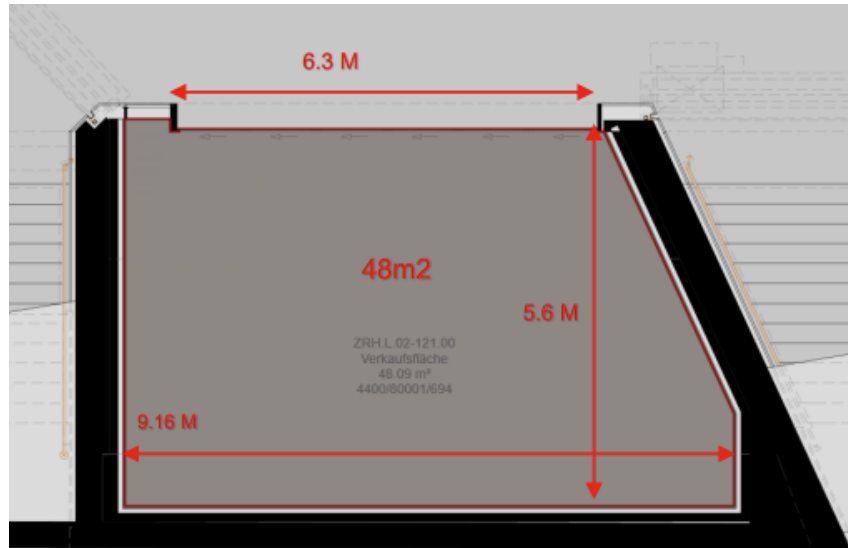
Please refer to the station plan for all tenants Zürich HB.

Over 400'000
people passing by daily at the station.

Pop-Up surrounding.



Floor plan.



The pop-up station has an installed professional catering kitchen, including refrigerated counters and display case. To start operations, all you need to do is bring individual, concept-specific equipment and decorate and brand according to your own needs. High-quality folding glazing completes the area and can be open or closed as required. The total area covers just under 50 m².

Current furnishings/equipment:

- Coffee machine by la Marzocco with 2 grinders
- Proofing cabinet from Wiesheu
- Hot air in-store oven (Euromat 64 S, without oven grate)
- 1x fridge and 1x freezer (incl. grating)
- Receiving station with cooled substructure
- 1 x washing machine
- Refrigerated display cases

The tenant must provide technical retrofitting for operating hotplates.

Approx. 50'000
people passing by daily in front of the surface

Pictures of the surface.



Exterior view



View from inside: display cases and counter space

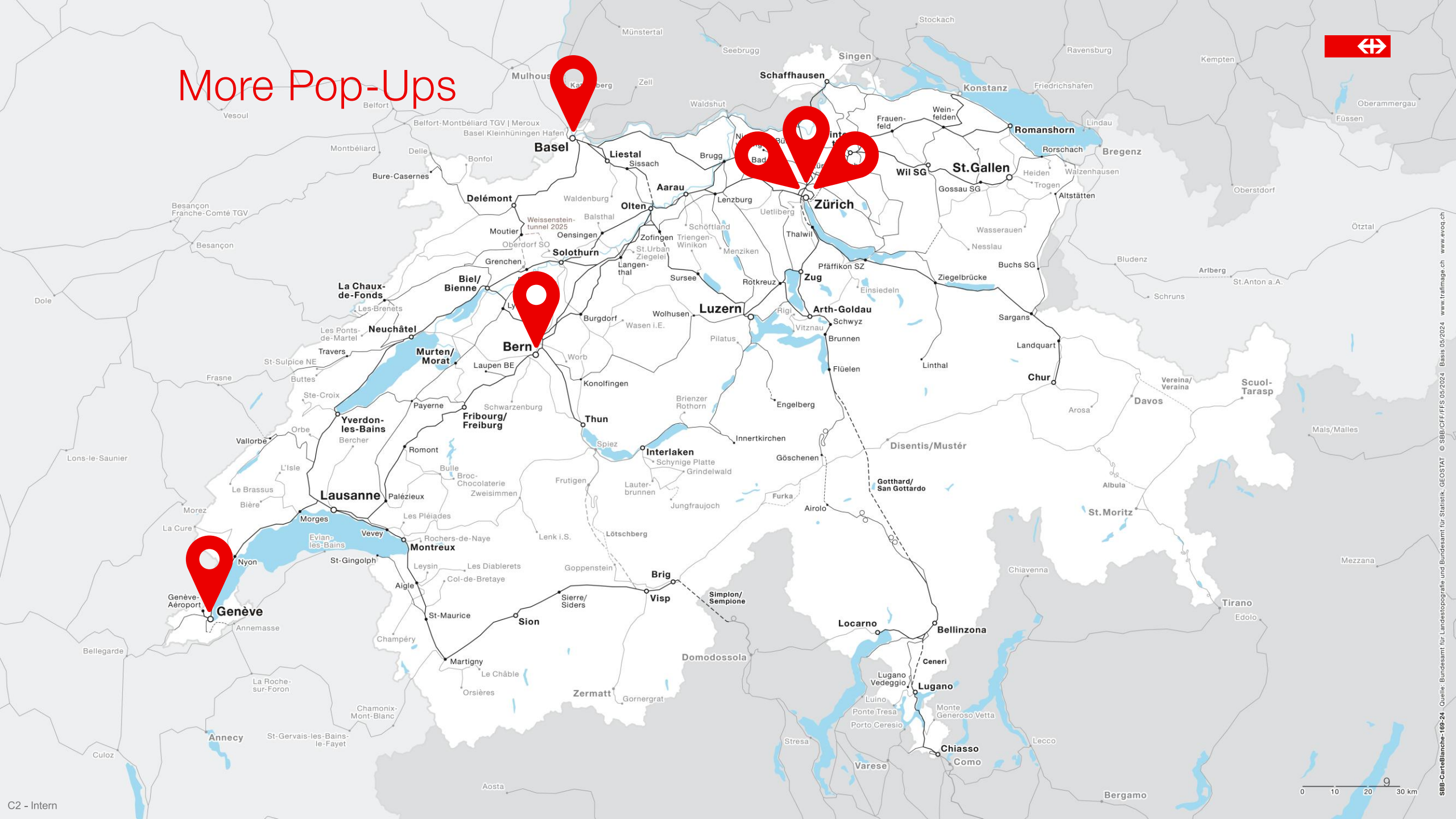


View from the space looking outward toward the escalator

Information on fit-out.

Responsibility	Topic	Information
SBB (base fit-out)	Heating	Not Available
	Electricity & Internet	Various sockets, 230 V, 160A No internet available.
	Lighting	Basic lighting, additional ceiling spotlights for individual illumination
	Flooring	Slab floor
	Water	Supply pipe and washbasin within rental unit.
	Surface finishing	Top-quality folding glazing. Can be open or closed as required.
	Restrooms	Staff toilet available in the rental unit
	Ventilation	2'000m ³ /h
Tenant (tenant fit-out)	Shop address	Adhesive foil for the light box at the top, right side and modules under the display case.
	Furnishings / interior setup	The furniture will be provided by the tenant.

More Pop-Ups





We look forward to
your concept.

Apply now via our [contact form](#).